

MODERN WHISPERS

DHRITI WADIWALA

A woman with dark hair and a large, white, flower-shaped earring is looking towards the camera. She is wearing a red, long-sleeved, off-the-shoulder dress with a ruffled neckline. Her right hand is resting on her left shoulder, and she is wearing several rings. The background is a dark, textured blue. The name 'rosalie' is written in a white, serif font across the center of the image.

rosalie



rosalie

A square neckline and puffed sleeves highlight your collarbones, while delicate frills cascade gracefully down the waist, enveloping your form in a gentle pink radiance.

An ideal pick for a romantic evening.



A silhouette of a woman's head in profile, facing left, is centered against a dark background. A vertical strip of warm, golden light illuminates the background behind her head. The word "athena" is written in a white, serif font across the middle of the image, overlapping the silhouette.

athena



athena

A mesmerizing symbol of contemporary grace, worthy of a goddess. Fashioned from opulent sandy-hued satin, this gown showcases asymmetrical sleeves, one delicately draped for a romantic silhouette, and the other providing balance.

An impeccable choice for those special moments.



A woman is shown in profile, facing right. She has dark hair and is wearing a light blue, possibly silk, dress. Her right hand is resting on her left shoulder. The background is a textured, light-colored wall. The word "marina" is written in a white, serif font across the center of the image, partially overlapping the woman's face and shoulder.

marina



marina

An exquisite floor-length gown in ocean blue satin. Its halter neckline exudes elegance, while the captivating backless design showcases a pleated cowl, imparting a dynamic flair.

Ideal for formal evenings or special occasions, this dress defines sophistication with a touch of allure.



A woman with dark hair, wearing a brown, draped, knotted dress, is shown in profile against a rustic wooden wall. She has her eyes closed and a serene expression. Her right hand is resting on her chest, and she is wearing a gold bracelet. The name 'valeria' is written in a white, lowercase, serif font across the center of the image.

valeria



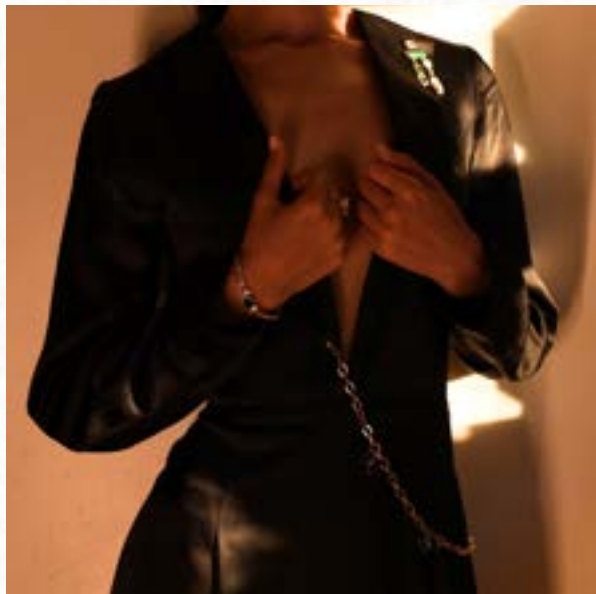
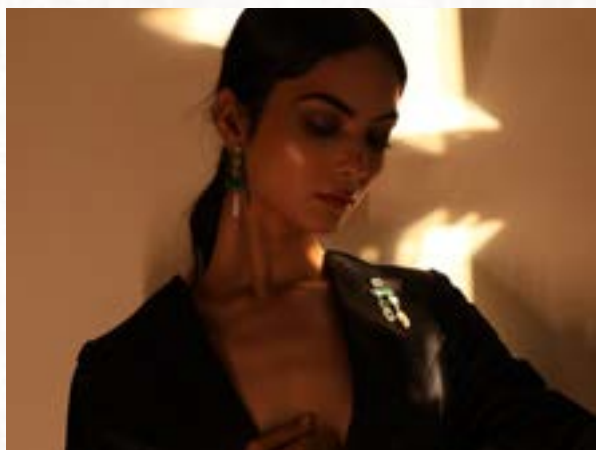
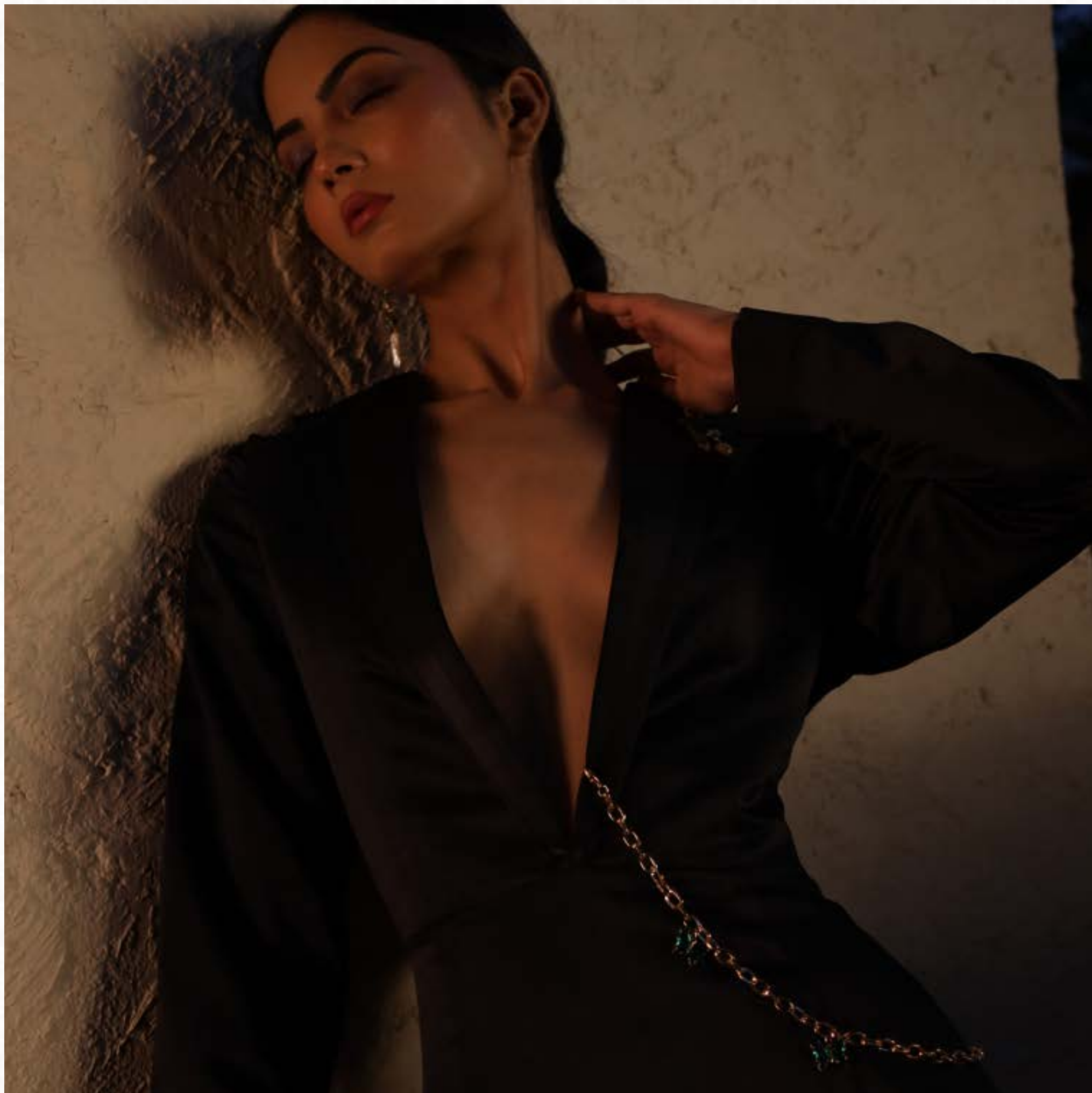
valeria

A beautiful floor-length dress in a soft mauve satin fabric. The dress showcases a graceful halter neckline that comes together with an intricate knot in the center, adding a touch of charm and sophistication to the overall design.



A woman with dark hair pulled back, wearing a black, long-sleeved, low-cut dress with a chain detail at the waist. She is looking down and to the left. The background is a dark, twilight sky with some blurred lights and structures. The name 'alessandra' is written in a white, serif font across the center of the image.

alessandra



alessandra

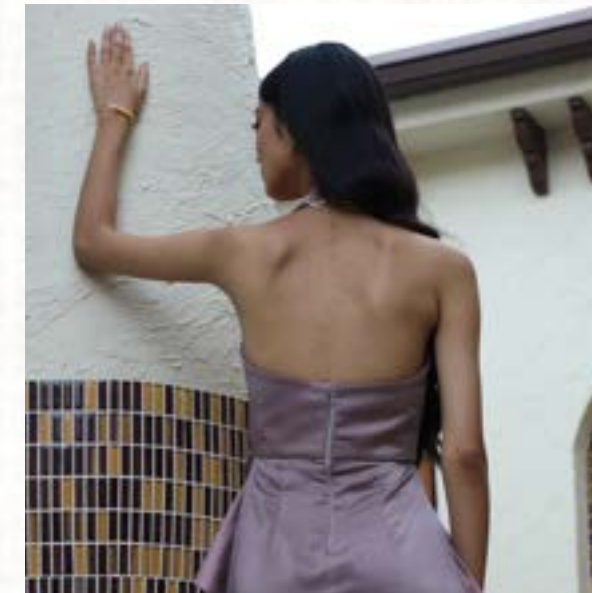
A captivating floor-length black satin dress that exudes power and confidence. The dress features pleated collars that frame the neckline gracefully, while its structured full sleeves add a touch of drama and flair.

A perfect choice for making a stylish statement at any formal event.



A woman with long dark hair, wearing a purple strapless dress and a gold bracelet, is shown from the back, touching a white textured wall with her right hand. The word "stella" is written in white lowercase letters across her back. The background features a white wall with a dark horizontal line, two dark vertical objects, and a small lantern-like object. A circular window with a yellow and black grid pattern is visible in the bottom right corner.

stella



stella

A mesmerizing floor-length mauve satin dress that effortlessly catches the eye. This two-toned beauty boasts a unique design with a flap detail that starts from the neckline and extends below the waistline, creating an intriguing and visually appealing element.

This dress is sure to make a lasting impression at any special occasion.



A woman with long dark hair is shown in profile, facing right. She is holding a large, dense bouquet of bright yellow chrysanthemums with both hands. The bouquet is positioned in front of her face, partially obscuring it. She is wearing a dark, possibly black, sleeveless top and a delicate necklace. The background consists of a light-colored, textured wall, possibly made of stone or plaster. The overall lighting is soft and somewhat dim, creating a moody atmosphere. The word "sierra" is overlaid in the center of the image in a white, serif font.

sierra



sierra

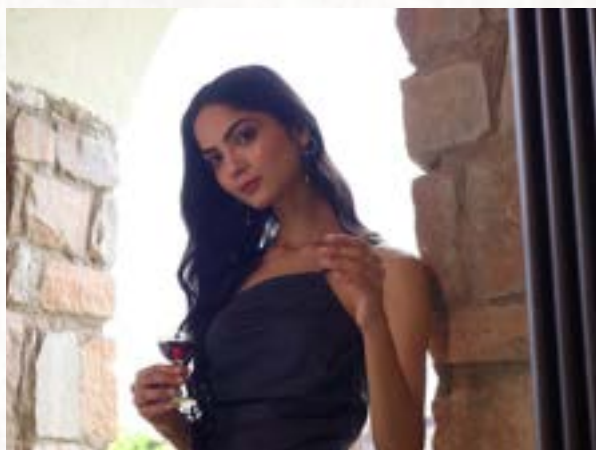
A chic dress that grazes the shins, crafted from luxurious cerulean blue satin. The dress showcases an asymmetric neckline with a stylish detachable bralette detail, adding a contemporary and alluring touch to the overall design.

A look that's both sophisticated and on-trend, perfect for making a fashionable statement.



raven





raven

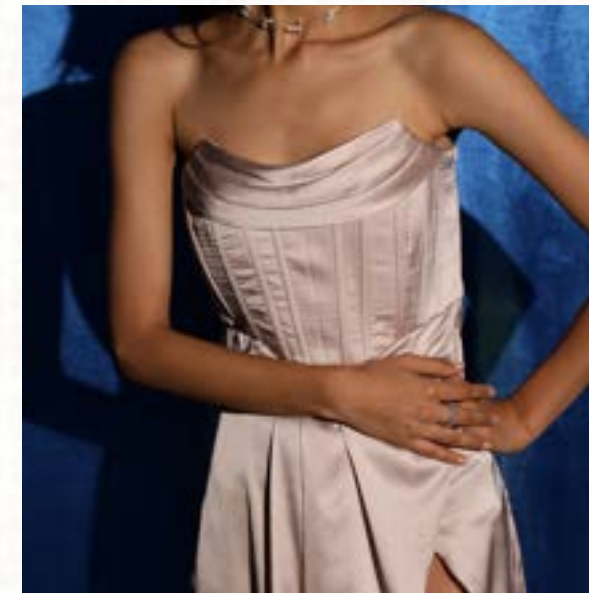
An alluring minidress in a bold cerulean blue satin that commands attention. Sporting a stylish one shoulder design, the dress showcases an elaborate strap detail that introduces elegance and a hint of panache.

The backless cut elevates its appeal, presenting an excellent option for individuals aiming for a daring and refined appearance, be it a night out or an exceptional occasion.



A woman with long dark hair is shown in profile, looking down. She is wearing a light-colored, possibly white or cream, dress with a gathered waist and a pearl necklace. Her right hand is raised towards her chest. The background is a textured, deep blue wall. The lighting is soft, highlighting her features and the texture of the dress.

sofia



sofia

A ravishing rosé-coloured satin minidress that's bound to turn heads. This strapless beauty boasts a corset-style design that adds a touch of allure and structure to the bodice.

To further enhance its charm, the dress features an asymmetrical thigh slit, creating an intriguing and stylish detail that adds movement and elegance to the look.

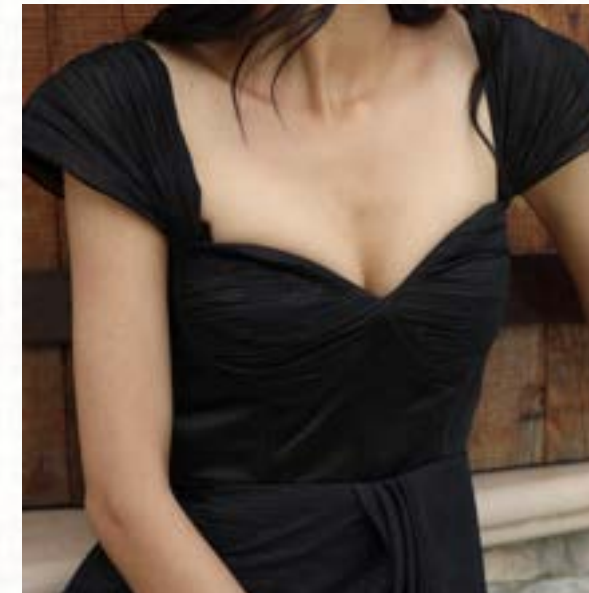




celeste

celeste

An exquisite full-length dress adorned in shimmering black fabric. This gown combines allure and sophistication effortlessly, showcasing a daring thigh-high slit for a touch of intrigue. The corset detailing elegantly accentuates your figure, while the pleated off-shoulder sleeves lend a romantic and enchanting air.





WADBIWALA
WADBIWALA
WADBIWALA