

DWV  
Belle âme



# Belle âme

Introducing 'Belle âme' - A symphony of timeless elegance.

With the threads spun from the imagination, we present 'Belle âme' - an ode to the eternal beauty of the feminine spirit. This collection is for a woman of grace, finding joy in the subtle, fleeting moments that make life exquisitely beautiful. It ignites a passion within women whose presence is as fluid as it is radiant, embodying an energy that captivates and inspires. This collection is not merely a series of garments; it is a celebration of women who elegantly navigate the space between dreams and reality.

Step into the world of DW where every design tells a story, every stitch is a memory, and every woman becomes the muse of her own narrative.

Join us celebrating the essence of 'Belle âme' - where each creation is a love letter to the art of living beautifully.







DW

(BA01)

## CAROLINA DRESS

Step into sophistication with this rust coloured satin dress, enhanced by metallic blend for a subtle shimmer.

It's flowy, short silhouette exudes effortless chic, perfect for a modern, elegant look.





DW

(BA02)

## PALOMA SET

This elegant set pairs luxurious white straight pants with a rust coloured satin top, infused with metallic blend for a playful shimmer.

The top's waistline ruffles add a touch of whimsy, creating a perfect balance of sophistication and modern flair.

P.S. We're excited to share that you can now purchase the separates from this collection at a competitive price.





DW

(BA03)

## RAYA DRESS

This white shin length dress showcases refined gathers at the waist and back, sculpting a graceful silhouette.

The piece is exquisitely cut open at the back, designed to subtly enhance the wearer's poise.







DW

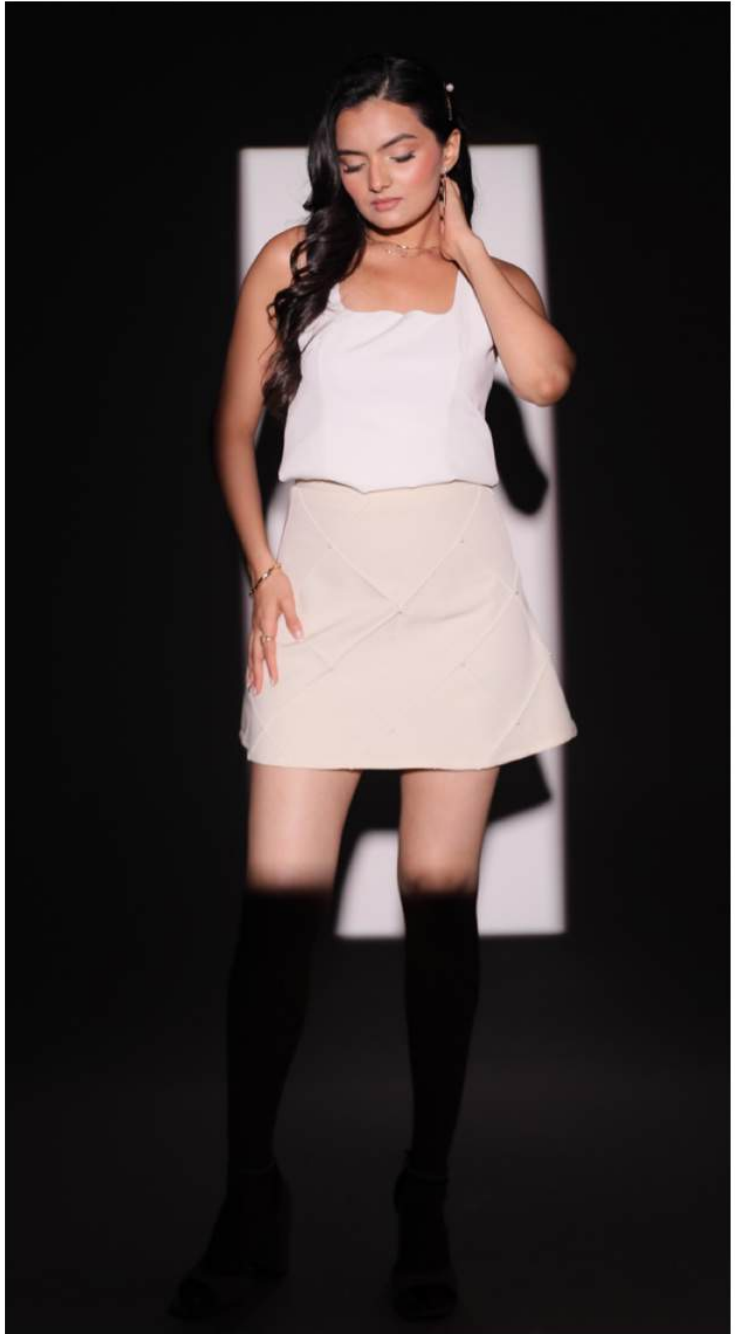
(BA04)

## STACY SET

This chic set features a short skirt adorned with a symmetrical pin tucks and hand embroidered pearls for a touch of subtle charm.

Paired with a simple top featuring a wave neckline, it offers a perfect blend of modern style and allure.

P.S. We're excited to share that you can now purchase the separates from this collection at a competitive price.





DW

(BA05)

## LANA DRESS

This short dress, crafted from luxurious fabric, features a pleated waistline and a flattering neckline that adds a touch of allure.

Simple yet effortlessly chic, it is the perfect choice for a casual outing with a sophisticated edge.





LDW

(BA06)

## LIARA DRESS

This satin dress effortlessly enhances the wearer's silhouette, exuding timeless luxury. The stunning pleat detail on the neckline is a true show stopper, adding a touch of refined elegance to the design.





DW

(BA07)

## LEYA DRESS

Crafted from luxurious fabric, this beige, shin length dress exudes timeless charm.

the delicate details on the upper torso add a subtle yet captivating touch, making it a standout piece at any event.







DW

(BA08)

## ALARA SET

This set features straight fit pants with pin tuck detailing, crafted from luxurious fabric for a comfortable yet refined look. Paired with a charming top that enhances the silhouette with balloon sleeves and a cross tie-up detail with a pearl embellishment in the centre.

P.S. We're excited to share that you can now purchase the separates from this collection at a competitive price.





DW

(BA09)

## KAIROS DRESS

This black satin dress exudes elegance, featuring hand embroidered pearls that beautifully accentuate the neckline.

The addition of the bell sleeves adds a graceful touch, making this piece a stunning blend of sophistication and charm.





DW

(BA10)

## GRECIAN DRESS

This black A-line dress features a cinched waist and a daring slit, creating a sleek and elegant silhouette. The pleated collar adds a touch of sophistication, elevating the overall look of the design.

P.S. We're excited to share that the DW waist belt is available to complete your look



